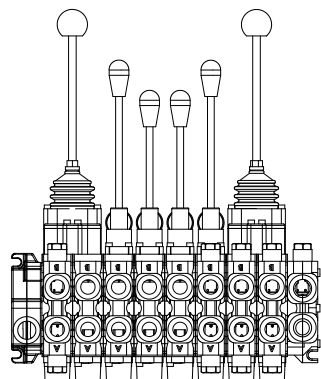
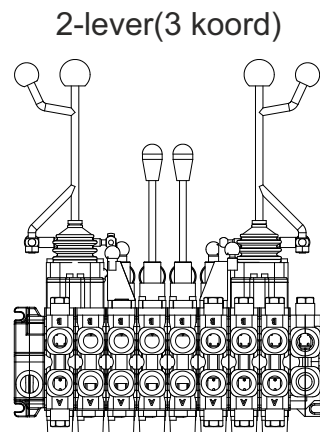


Mechanical controls

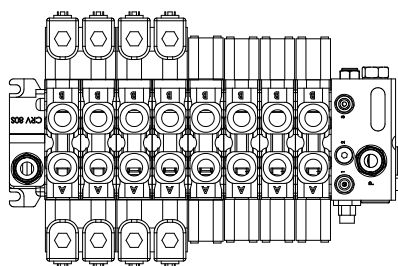
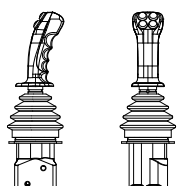
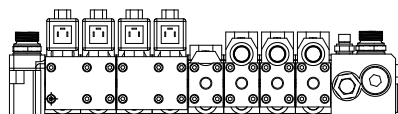
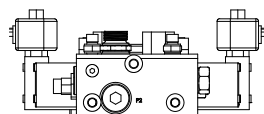


2-lever
mechanical control
27 kg

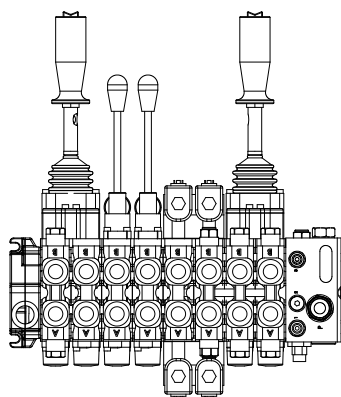


2-lever(3 koord)
mechanical control
27 kg

Pre-hydraulic controls (EO)



Mechanical pre-hydraulic on-off



2-lever on-off
mechanical control + prehydraulic on/off
12 VDC, 2.5 AMP
On-off control pressure 20-30 bar
32 kg

Max pressure	250 bar
Max flow	80 l/min
Max return line pressure	10 bar
Max oil temperature	+60 C
Min oil temperature	- 20 C
Servo control pressure	25-35 bar

Connections

Ports pressure in and out	G3/4"
Ports (work)	G1/2"
Ports servo control	G1/4"

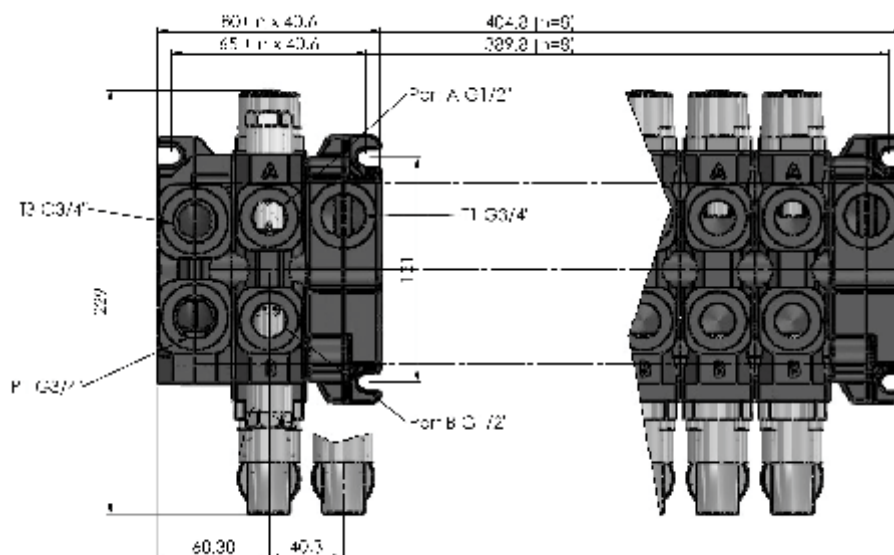
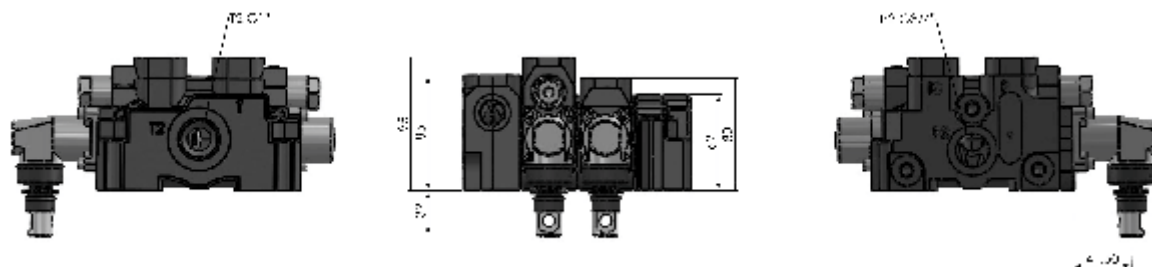
Electrical	12 VDC 2.5 amp
------------	-------------------

FINN ROTOR



CRV 80S

Max flow	80 lpm
Max work press	250 bar
Max tank press	10 bar
Oper temperature	-20 c + 60 c



A hydraulic control valve, light-weight and small in size, particularly used as valves for agricultural loaders and timber.

get Your crane moving!



WWW.FINN-ROTOR.COM
INFO@FINN-ROTOR.COM
+358 14 417 8400

PL 96,43101 SAARIJÄRVI
FINLAND