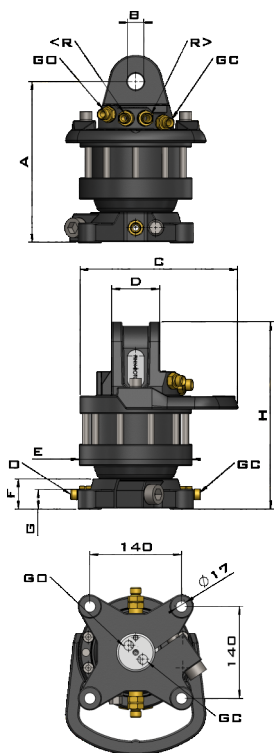
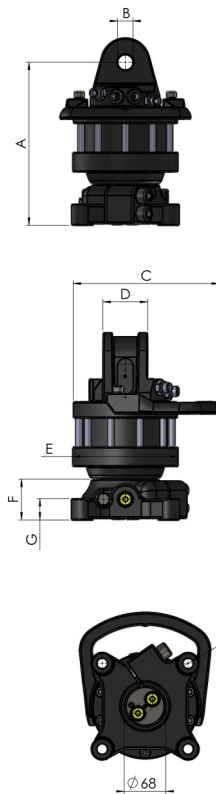


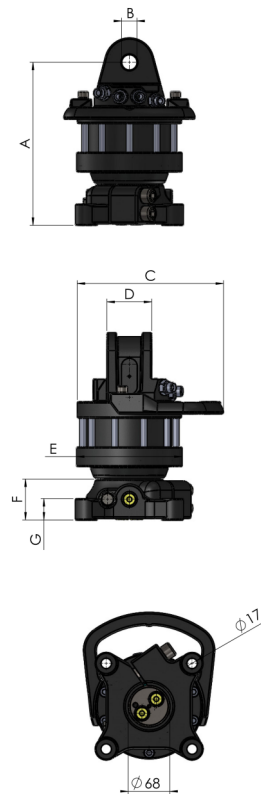
CR 300 F140
CR 400 F140



CR 400 F140A68
CR 400 F173A68



CR 500 F140
CR 500 F173

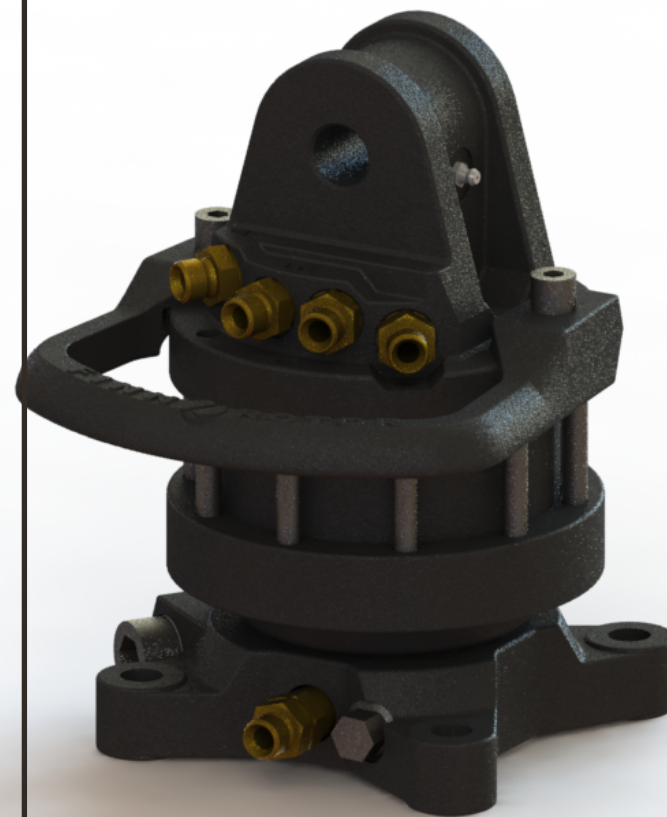


FLANGE F140=140 x 140 MM
FLANGE F173= 6 x 173 MM

FLANGE F140=140 x 140 MM
FLANGE F173= 6 x 173 MM

	CR 300 F140		CR 304S F140		CR 400 F140		CR 404S F140	
	MM	IN	MM	IN	MM	IN	MM	IN
A	232	9,134	232	9,134	246	9,665	246	9,665
B	25	0,984	25	0,984	25	0,984	25	0,984
C	234	9,213	225	8,858	241	9,488	240	9,449
D	60	2,362	60	2,362	73	2,874	73	2,874
E	158	6,220	158	6,220	172	6,772	172	6,772
F	46	1,811	46	1,811	46	1,811	46	1,811
G	30	1,181	30	1,181	30	1,181	30	1,181
H	267	10,512	267	10,512	286	11,26	286	11,26

	CR 400 F140A68		CR 400 F173A68		CR 500 F140		CR 500 F173	
	MM	IN	MM	IN	MM	IN	MM	IN
A	273	10,748	273	10,748	273	10,748	273	10,748
B	25	0,984	25	0,984	30	1,181	30	1,181
C	241	9,488	241	9,488	234	10,472	234	10,472
D	73	2,874	73	2,874	73	2,874	73	2,874
E	172	6,772	172	6,772	184	7,244	184	7,244
F	67	2,638	67	2,638	67	2,638	67	2,638
G	35	1,378	35	1,378	35	1,378	35	1,378
H	305	12,008	305	12,008	313	12,323	313	12,323

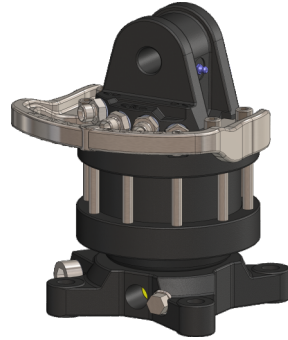


CR 300 F140
CR 400 F140



CAST HOSE GUARD
AND CAST STEEL FLANGE
WITG DOUBLE CONNECTIONS

CR 304S F140
CR 404S F140



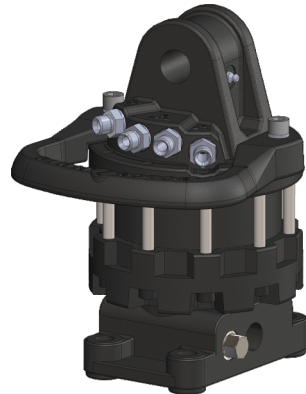
STEEL HOSE GUARD
AND CAST STEEL FLANGE
WITG DOUBLE CONNECTIONS

CR 400 F140A68
CR 400 F173A68



CAST HOSE GUARD
AND CAST STEEL FLANGE
WITG DOUBLE CONNECTIONS
AND DOUBLE LOCKING BOLTS

CR 500 F140
CR 500 F173



CAST HOSE GUARD
AND CAST STEEL FLANGE
WITG DOUBLE CONNECTIONS
AND DOUBLE LOCKING BOLTS

	CR 300F		CR 400F		CR 400F A68		CR 500F	
	UNLIMITED		UNLIMITED		UNLIMITED		UNLIMITED	
ROTATION ANGLE								
MAX PRESSURE (R) [BAR/PSI]	250	3625	250	3625	250	3625	250	3625
MAX PRESSURE (GO) [BAR/PSI]	200	2900	200	2900	200	2900	200	2900
MAX PRESSURE (GC) [BAR/PSI]	300	4350	300	4350	300	4350	300	4350
DISPLACEMENT [CM ³ / IN ³]	330	20,1	420	25,6	420	25,6	465	28,4
TORQUE [NM/LB-FT]	900	664	1100	811	1100	811	1400	1033
MAX AXIAL LOAD STAT [KN/LBF]	30	6744	40	8992	50	11241	55	12365
MAX AXIAL LOAD DYN [KN/LBF]	15	3372	20	4496	25	5620	25	5620
WEIGHT [KG/LB]	22	48,4	28	61,6	30	66	33	72,6
CONNECTIONS (TOP)	G3/8"	G3/8"	G3/8"	G3/8"	G3/8"	G3/8"	G3/8"	G3/8"
(BOTTOM)	G1/4"	G1/4"	G3/8"	G3/8"	G3/8"	G3/8"	G3/8"	G3/8"
REQ. OIL FLOW [LPM/GPM]	20	5,284	20	5,284	20	5,284	20	5,284



SELECT A CR F SERIES
WHEN YOU NEED THE BEST
PRODUCTIVITY AND POWER.

A LIGHT-WEIGHT AND EFFECTIVE
HYDRAULIC ROTATORS WITH
UNLIMITED ROTATION FOR
CARGO AND FOREST CRANES.

CHOOSE GENUINE **FINN ROTOR**
ORIGINAL ACCESSORIES TO
ENSURE SMOOTH WORKING.
FROM THE WIDE VARIETY, YOU
WILL FIND ALL NECESSARY
ACCESSORIES.

get Your crane moving!



get Your crane moving!

WWW.FINN-ROTOR.COM
INFO@FINN-ROTOR.COM
+358 14 417 8400

PL 96,43101 SAARIJÄRVI
FINLAND